

Filled System Thermometers

Gas Actuated - How to Order

Table 1
Case Size & Style

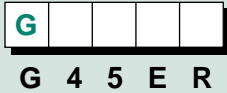


Table 2
Thermal System & Bulb



Table 3
Capillary Length (feet)



Table 4
Temperature



Table 5
Options



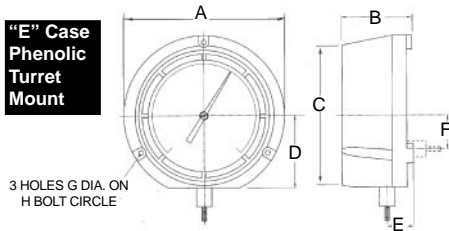
Table 1-Case Style

Wall Mount ("E" or "K" case)

CASE CODE CASE DIAMETER CONNECTION

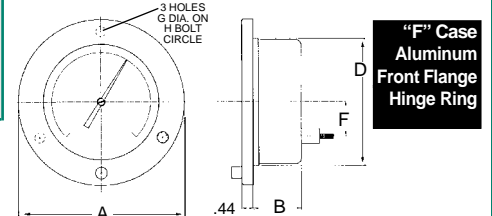
Panel Mount ("F", "S" or "U" case)

"E" Case
Phenolic
Turret
Mount



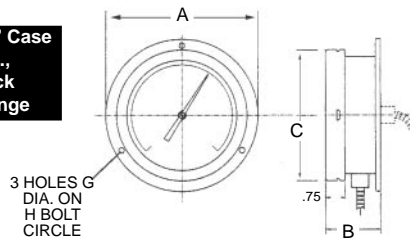
G45ER	4 1/2"	REAR
G45EL	4 1/2"	LOWER

G45FR	4 1/2"	REAR
G60FR	6"	REAR



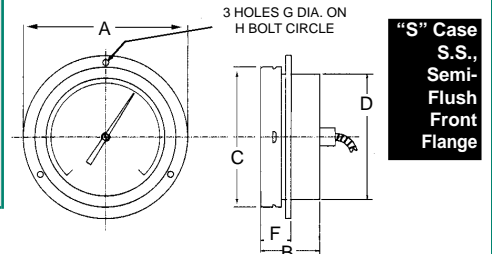
"F" Case
Aluminum
Front Flange
Hinge Ring

"K" Case
S.S.,
Back
Flange



G45KR	4 1/2"	REAR
G45KL	4 1/2"	LOWER
G60KR	6"	REAR
G60KL	6"	LOWER

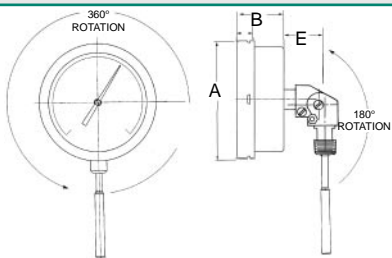
G45SR	4 1/2"	REAR
G60SR	6"	REAR



"S" Case
S.S.,
Semi-Flush
Front Flange

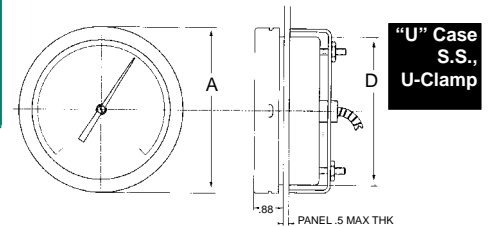
Direct Mount ("D" case)

"D" Case
S.S.,
All-Angle
Direct
Mount



G45DA	4 1/2"	ADJUST
G60DA	6"	ADJUST

G45UR	4 1/2"	REAR
G60UR	6"	REAR



"U" Case
S.S.,
U-Clamp

Case Dimensions

Case Size	Case	Type	A	B	C	D	E	F	G	H
4 1/2"	"E"	Turret Phenolic	5.83	2.56	5.08	2.62	1.0	.20	.24	5.39
4 1/2"	"F"	Front Flange	6.31	1.63	-	4.88	-	1.35	.19	5.38
4 1/2"	"K"	Back Flange	5.88	2.15	5.04	-	-	-	0.22	5.38
4 1/2"	"S"	Semi-Flush	5.88	2.15	5.04	4.51	-	1.00	0.22	5.38
4 1/2"	"D"	All Angle	5.04	2.00	-	-	1.70	-	-	-
4 1/2"	"U"	U-Clamp	5.04	-	-	4.51	-	-	-	-
6"	"F"	Front Flange	7.87	1.59	-	6.34	-	1.75	0.19	6.69
6"	"K"	Back Flange	7.50	2.15	6.38	-	-	-	0.25	6.84
6"	"S"	Semi-Flush	7.50	2.15	6.38	5.88	-	1.00	0.25	6.84
6"	"D"	All Angle	6.38	2.15	-	-	1.70	-	-	-
6"	"U"	U-Clamp	6.38	-	-	5.88	-	-	-	-

REOTEMP INSTRUMENT CORPORATION

Telephone: (800) 648-7737 FAX (858) 784-0720 • sales@reotemp.com • www.reotemp.com