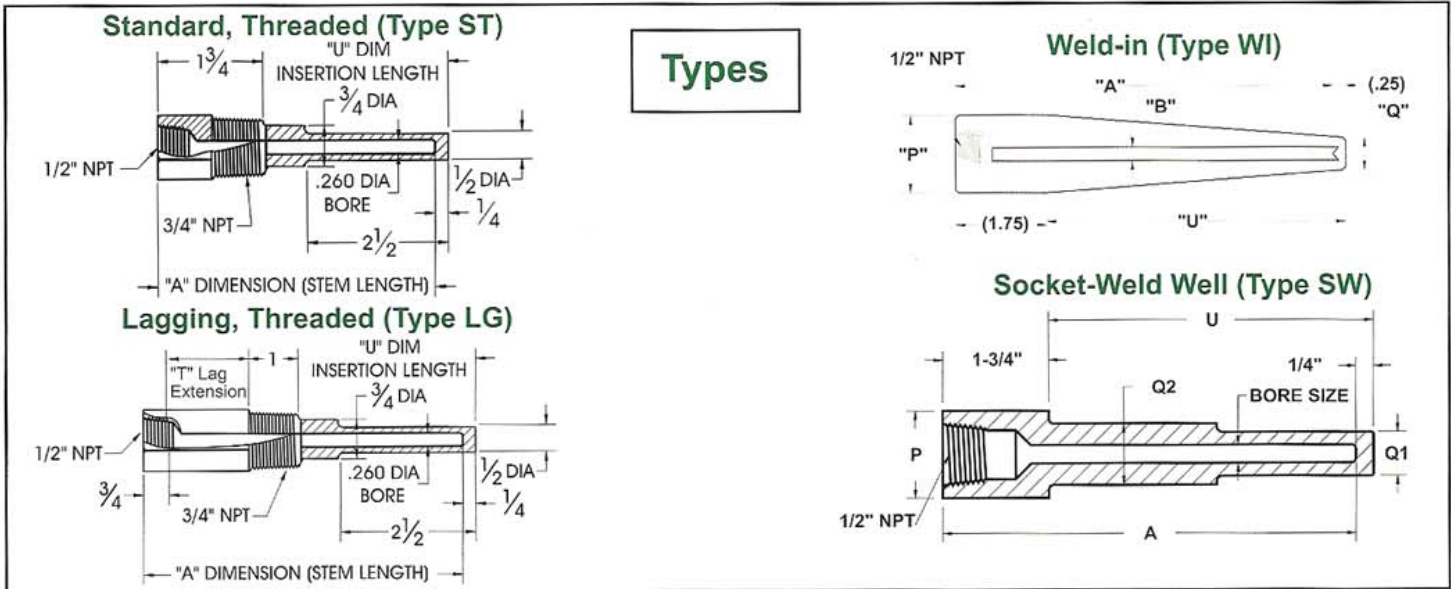


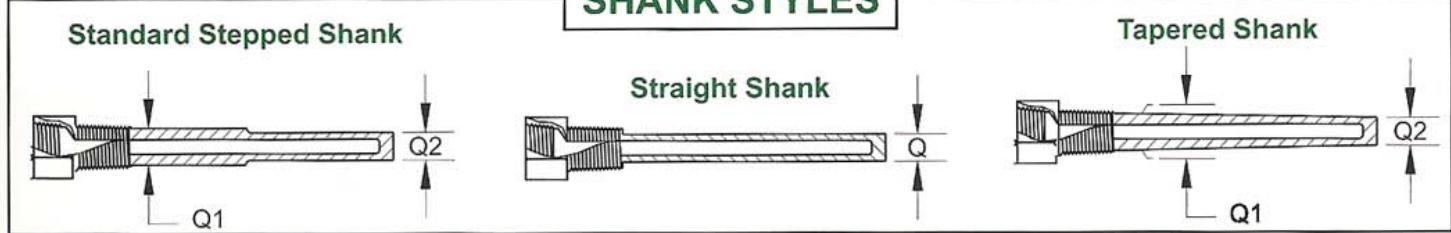
Thermowells Threaded, for Bimetal Thermometers

Thermowells make it possible to remove instrument without dropping pressure or losing contents. Each stainless Thermowell die stamped with type of material from which it is made.

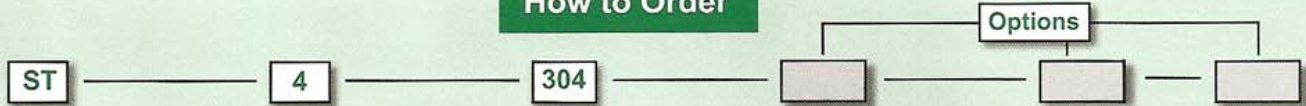


Types

SHANK STYLES



How to Order



Type	Stem Length "A"			Material	External Thread	Shank	Bore Dia.
ST = Threaded	2 = 2.5"			304 = 304 SS	For Threaded Wells	Blank for std. (stepped) " " = Stepped (std.) T = Tapered S = Straight	
LG = Threaded Lagging	4 = 4"			316 = 316SS/316L			
SW = Socket Weld	6 = 6"			B = Brass	For Socket Weld and Weld-in wells	Bore Diameter Blank for std. (.260 Bore) " " = .260 (std.) B3 = .385 B5 = .515	
SWL = Socket Weld w/ lag	9 = 9"			C = Carbon Steel (1018)			
WI = Weld-in	12 = 12"			G = Hast B			
WIL = Weld-in w/lag	2.0 = 2"			H = Hast C			
Standard Dimensions				M = Monel/A400	Blank for std. (3/4" pipe) " " = 3/4" pipe nominal (1.050" OD)-std P1 = 1" pipe nominal (1.315" OD)		
Stem "A"	Std. "U" Dim.	Lagging "U" Dim.	Overall Length	T = Titanium			
2 1/2"	1 5/8"	---	2 7/8"	Y = Inconel			
4"	2 1/2"	---	4 1/4"	A = Alloy 105 Carb. Stl.			
6"	4 1/2"	2 1/2"	6 1/4"	2 = Alloy 20			
9"	7 1/2"	4 1/2"	9 1/4"	5 = F5 Alloy			
12"	10 1/2"	7 1/2"	12 1/4"	P = PTFE Coated 316SS			
				N = F22 Alloy			

REOTEMP INSTRUMENT CORPORATION



Thermowells Flanged Types



How To Order

05 — **1** — **R** — **2** — **S** — **T** — **U020** — **L042**

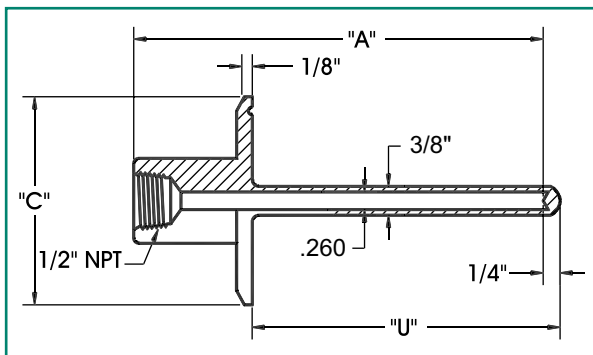
Flange Size	Flange Rating	Sealing Face	Bore Diameter	Material	Shank Style	"U" Dimensions	Overall Length
05 = 1/2" 10 = 1" 15 = 1.5" 20 = 2" 25 = 2.5" 30 = 3" 07 = 3/4"	1 = 150# 3 = 300# 6 = 600# 9 = 900 - 1500# 5 = 2500# V = VanStone	R = Raised Face F = Flat Face J = RTJ (Ring type joint) Q = Other (Specify)	2 = .260" (for 1/4" stem) 3 = .385" (for 3/8" stem) Q = Other (Specify)	S = 316SS F = 304SS C = Carbon Stl. D = Carp. 20 G = Hast B H = Hast C (276) L = F 11 Alloy M = Monel Y = Inconel (600) U = Tantalum Lined Z = Zirconium (316 flg) V = 317SS T = Titanium	T = Tapered S = Straight P = Stepped R = Tapered w/ support ring Q = Other	U020 = 2" U040 = 4" U070 = 7" U100 = 10" U130 = 13" U160 = 16" U220 = 22" U225 = 22.5" M250 = 250mm	L042 = 4.25" L062 = 6.25" L092 = 9.25" L122 = 12.25" L152 = 15.25" L182 = 18.25" L242 = 24.25" L247 = 24.75" M307 = 307mm
				<p>Note: std. overall length for a given "U" is on same line.</p>			

Thermowells Sanitary Thermowells



Features

- Provides Sanitary Protection for Temperature Probes
- All 316L Stainless Steel Construction
- Fast Installation & Removal
- Ideal for Food, Beverage, Biotech & Pharmaceutical Applications
- Finish Exceeds Ra 32 max. (finer finishes available)
- Exceeds 3A #4 Finish



How To Order



Tri-Clamp Size	"A" Stem Lengths	Part No.	"U" Dim	"C" Dim (Flange Dia.)
1 1/2"	2 1/2"	STF1.5-2.5	1 5/8"	2.0" (51mm)
	4"	STF1.5-4	2 1/2"	
	6"	STF1.5-6	4 1/2"	
	9"	STF1.5-9	7 1/2"	
2"	2 1/2"	STF2-2.5	1 5/8"	2.5" (63mm)
	4"	STF2-4	2 1/2"	
	6"	STF2-6	4 1/2"	
	9"	STF2-9	7 1/2"	
2 1/2"	2 1/2"	STF2.5-2.5	1 5/8"	3.0" (76mm)
	4"	STF2.5-4	2 1/2"	
	6"	STF2.5-6	4 1/2"	
	9"	STF2.5-9	7 1/2"	
3"	2 1/2"	STF3-2.5	1 5/8"	3.6" (91mm)
	4"	STF3-4	2 1/2"	
	6"	STF3-6	4 1/2"	
	9"	STF3-9	7 1/2"	